

EFEKT

ARMATURA

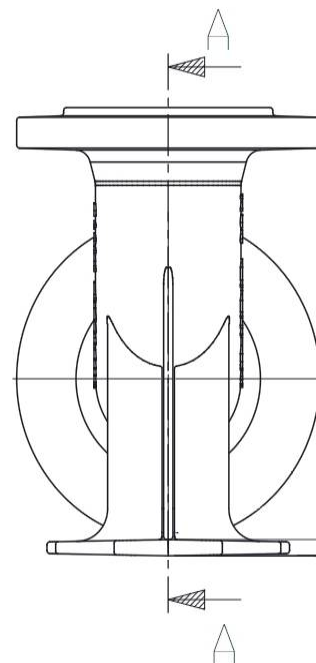
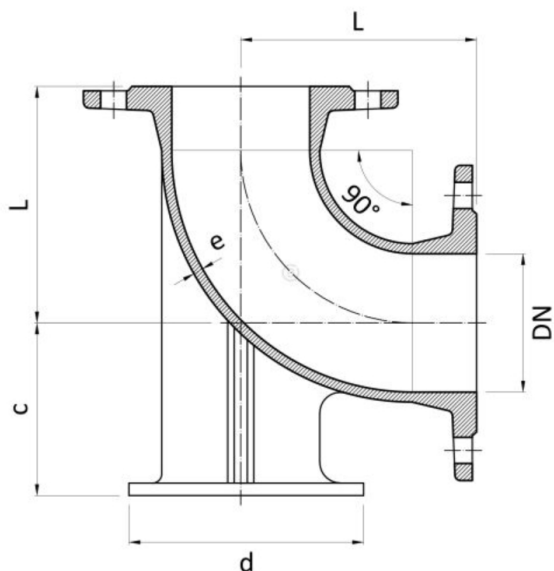


www.efekt.gniezno.pl
marketing@efekt.gniezno.pl
Tel. +48 61 427 22 45
Fax. +48 61 429 21 90

FITTINGS



Type : DUCKFOOT BEND – N – 65/80/100 PN 10 / PN 16



Technical data :

DN	L	C	d	e	Catalogue No.	Weight [kg]	Versions
[mm]							
65/4	165	100	165	7,0	8070	13,0	PN10 / 16
80/8	165	110	180	7,0	8070	15,0	PN10 / 16
100/8	180	125	200	7,2	8070	17,7	PN10 / 16



GG or GGG
Blue epoxy



GG PN10

Reflecting continuous progress of product development we reserve right for further construction changes or to produce product accordance to customer request.

Destination and construction characteristic :

- Manufactured accordance to DIN EN-545
- Body made of grey iron EN-GJL-250 to PN10/16 or EN-GJS-500-7 to PN16
- Flanges accordance to PN-EN 1092-2:1999 [DIN 2501]
- Powder paint layer : black bitumen coating or powder epoxy EN ISO 12944-5:2009 thickness 250 µm at PN16 - RAL5015 – in customer option
- Drilling of the flange 4 lub 8-otw (accordance to customer request)
- Flanged fittings are desgined for chaning water line direction
- N bend are used as a connection between hydrant and existing pipeline
- Production repeatability and quality guarantee accordance to EN ISO 9001:2008

Tel. +48 (61) 427-22-45
 Fax. +48 (61) 429-21-90
 Mob. +48 694-434-602 / 883-321-851
 marketing@efekt.gniezno.pl
 inquiry@efekt.gniezno.pl
 Skype : phuefekt_gniezno



Unia Europejska



PROGRAM REGIONALNY

NARODOWA STRATEGIA SPÓJNOŚCI

EFRR – WRPO 2007- 2013